



Facilities Information Systems

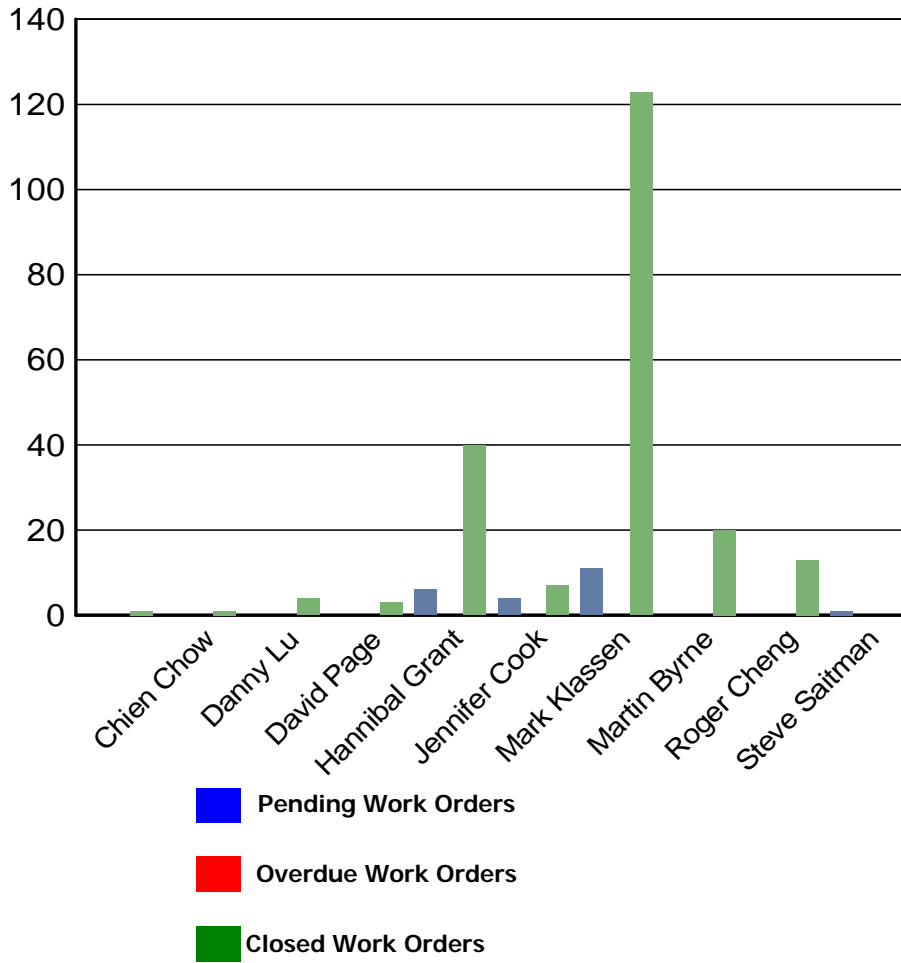
Bruce Abbott - Director

Track-It!

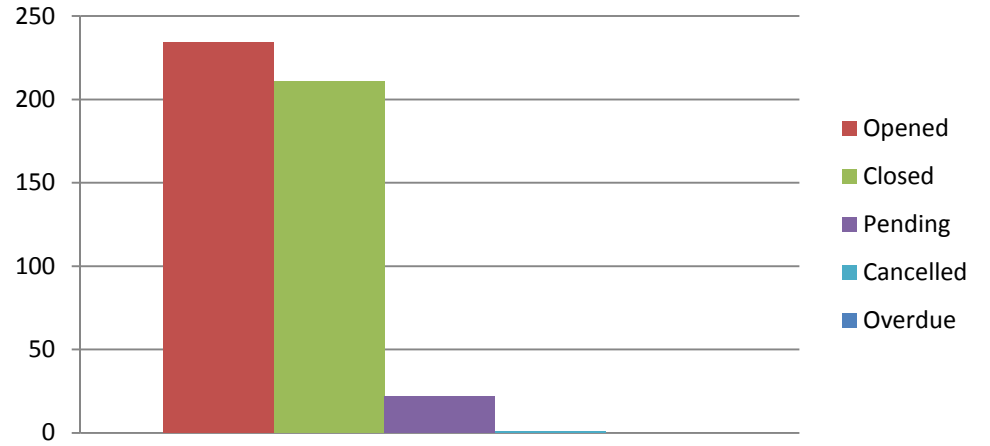
September Work Orders

SEPTEMBER 2008 Track-It! Calls

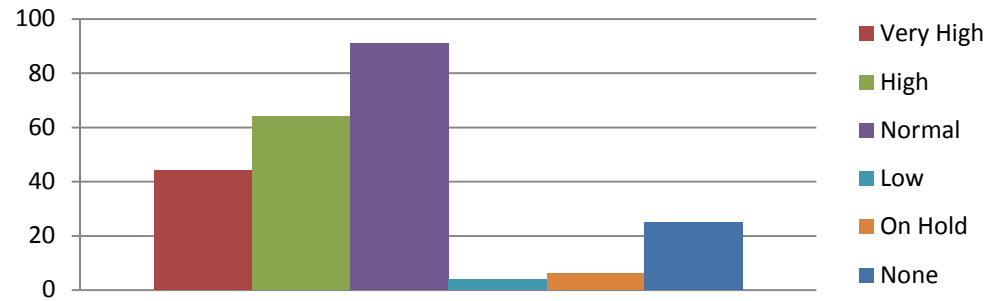
Technician



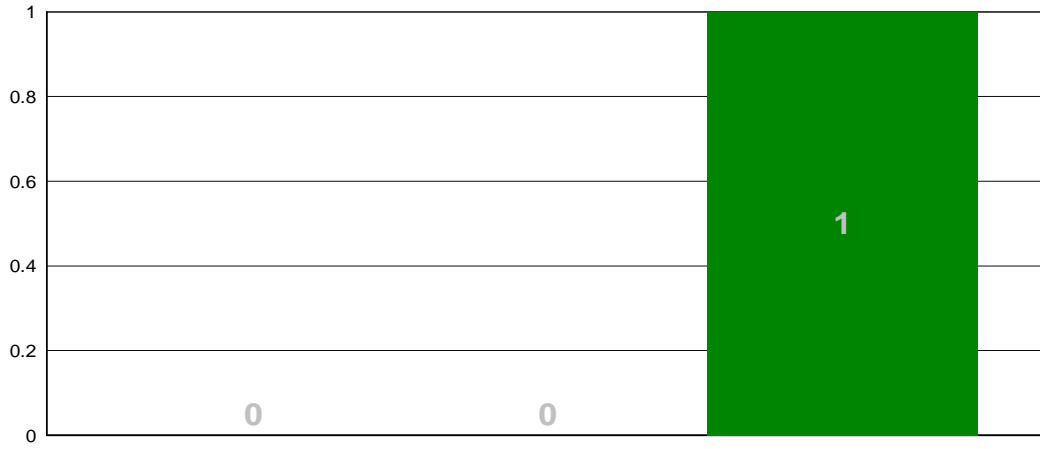
Status



Priority



For Chien Chow



- Pending Work Orders
- Overdue Work Orders
- Closed Work Orders

Chien Chow

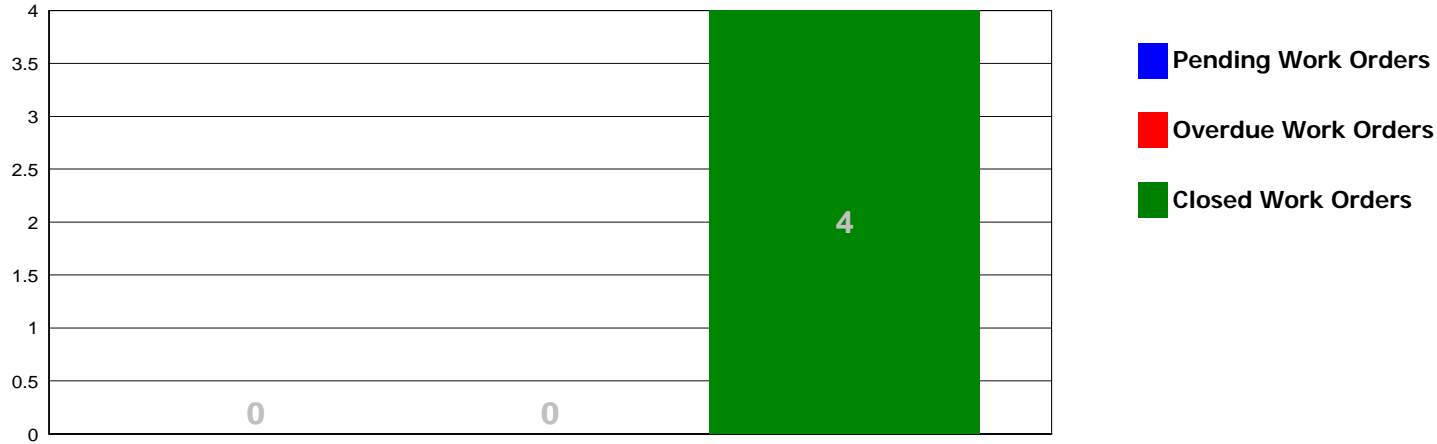
9/14/2008 Pending Work Orders 0 Overdue Work Orders 0 Closed Work Orders 1

Work Order	Priority	Opened	Closed	Status	Days To Complete
19280		9/15/2008 2:23:08 PM	9/30/2008 1:24:58 PM	Closed	15

1

	Pending Work Orders	Overdue Work Orders	Closed Work Orders	Avg Days to Complete
Chien Chow	0	0	1	15

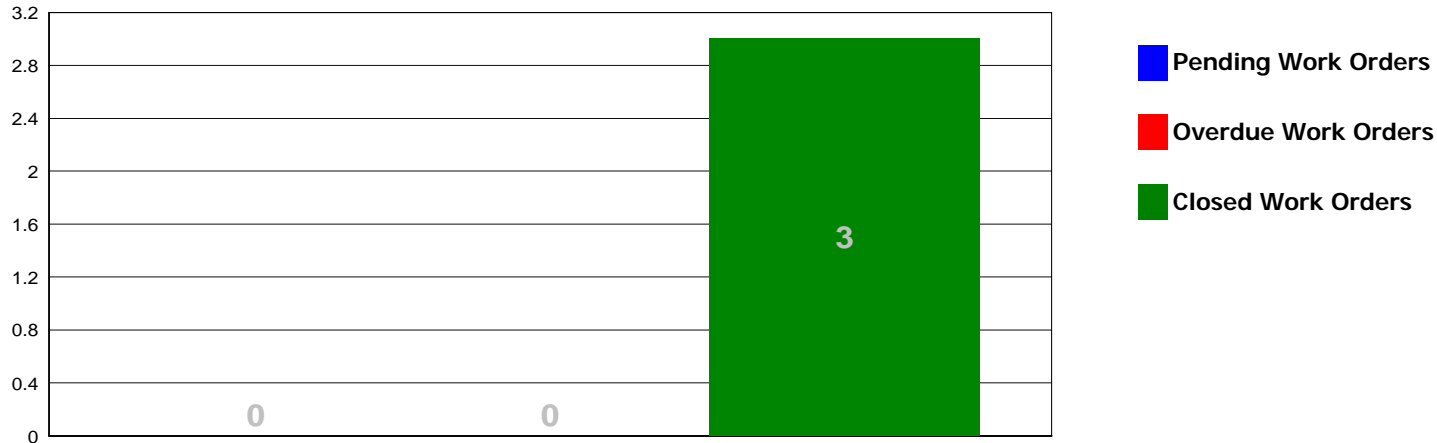
For Danny Lu



Danny Lu

8/31/2008		Pending Work Orders	0	Overdue Work Orders	0	Closed Work Orders	1
Work Order	Priority	Opened		Closed		Status	Days To Complete
19223		9/6/2008 8:27:05 AM		9/17/2008 11:59:57 AM		Closed	11
19237		9/9/2008 7:45:45 AM		9/17/2008 7:35:42 AM		Closed	8
19263	2 - High	9/11/2008 7:13:29 AM		9/17/2008 7:35:24 AM		Closed	6
19345	2 - High	9/22/2008 8:53:51 AM		9/22/2008 1:48:11 PM		Closed	0
4							
			Pending Work Orders	Overdue Work Orders	Closed Work Orders		Avg Days to Complete
			0	0	4		6
		Danny Lu					

For David Page



David Page

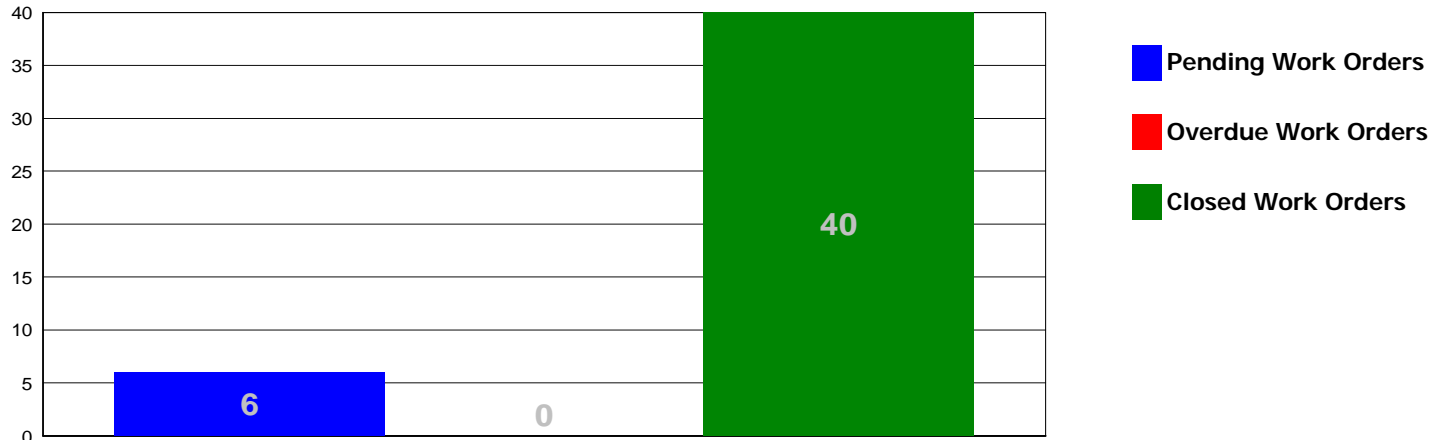
9/7/2008	Pending Work Orders 0	Overdue Work Orders 0	Closed Work Orders 1
----------	-----------------------	-----------------------	----------------------

Work Order	Priority	Opened	Closed	Status	Days To Complete
19268	1 - Very High	9/11/2008 9:10:45 AM	9/25/2008 11:16:37 AM	Completed	14
19312	2 - High	9/17/2008 1:42:20 PM		Open	-
19364	1 - Very High	9/23/2008 2:08:13 PM	9/26/2008 9:23:52 AM	Completed	3

3

	Pending Work Orders	Overdue Work Orders	Closed Work Orders	Avg Days to Complete
David Page	0	0	3	8

For Hannibal Grant



Hannibal Grant

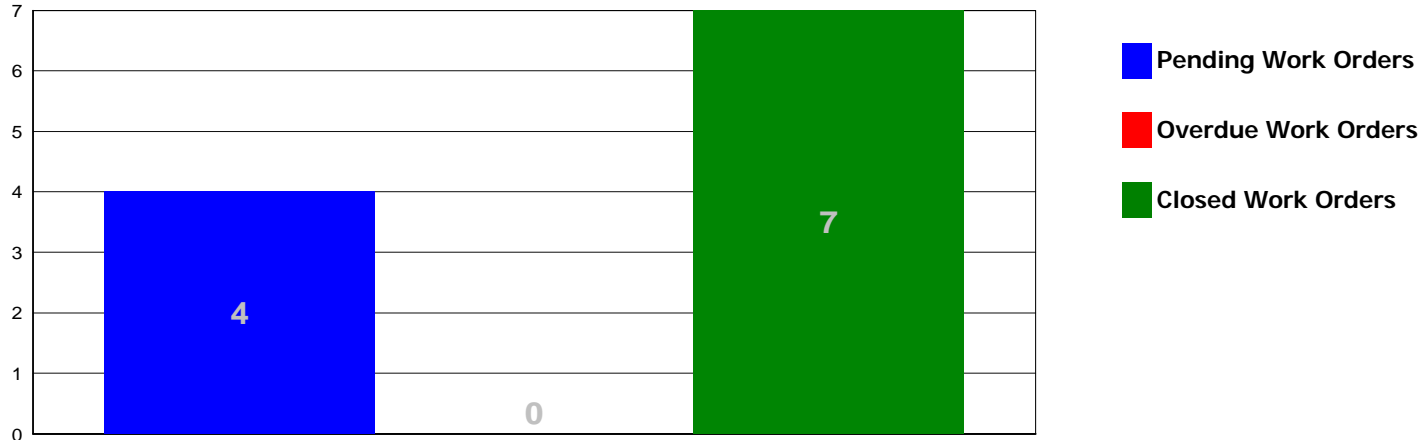
8/31/2008	Pending Work Orders	0	Overdue Work Orders	0	Closed Work Orders	9
Work Order	Priority	Opened	Closed	Status	Days To Complete	
19197	1 - Very High	9/3/2008 8:19:44 AM	9/4/2008 11:13:19 AM	Completed	1	
19222	1 - Very High	9/5/2008 2:05:20 PM	9/8/2008 10:17:16 AM	Completed	3	
19192	3 - Normal	9/2/2008 8:02:56 PM	9/8/2008 9:34:53 AM	Completed	6	
19213	3 - Normal	9/4/2008 2:46:02 PM	9/5/2008 3:38:47 PM	Completed	1	
19196	3 - Normal	9/3/2008 8:06:23 AM	9/8/2008 3:16:56 PM	Completed	5	
19201	3 - Normal	9/3/2008 1:42:24 PM	9/4/2008 10:08:34 AM	Completed	1	
19202	3 - Normal	9/3/2008 2:06:17 PM	9/4/2008 9:43:00 AM	Completed	1	
19217	3 - Normal	9/5/2008 12:57:34 PM	9/10/2008 11:42:46 AM	Completed	5	
19219	3 - Normal	9/5/2008 1:09:45 PM	9/10/2008 12:01:29 PM	Completed	5	
19226	1 - Very High	9/6/2008 7:01:32 PM	9/8/2008 3:16:07 PM	Completed	2	
19227	1 - Very High	9/6/2008 8:01:52 PM	9/24/2008 9:49:18 AM	Completed	18	
19240	1 - Very High	9/9/2008 8:45:04 AM	9/11/2008 8:14:41 AM	Completed	2	
19252	2 - High	9/10/2008 9:34:29 AM	9/17/2008 9:01:48 AM	Completed	7	
19262	3 - Normal	9/11/2008 6:27:25 AM	9/11/2008 12:04:54 PM	Completed	0	
19247	3 - Normal	9/10/2008 7:23:01 AM	9/10/2008 3:00:57 PM	Completed	0	
19289	2 - High	9/16/2008 9:32:02 AM	9/22/2008 10:27:48 AM	Completed	6	
19301	2 - High	9/17/2008 7:08:38 AM	9/24/2008 9:49:44 AM	Completed	7	
19329	3 - Normal	9/19/2008 6:30:33 AM	9/19/2008 2:39:28 PM	Completed	0	
19330	3 - Normal	9/19/2008 6:34:51 AM	9/19/2008 12:38:47 PM	Completed	0	
19334	3 - Normal	9/19/2008 10:30:35 AM	9/22/2008 11:29:45 AM	Completed	3	
19323	3 - Normal	9/18/2008 10:13:13 AM	9/19/2008 8:36:15 AM	Completed	1	
19325	3 - Normal	9/18/2008 11:29:08 AM	9/19/2008 12:37:45 PM	Completed	1	

19288	3 - Normal	9/16/2008 9:19:30 AM	9/17/2008 3:17:07 PM	Completed	1
19349	2 - High	9/22/2008 1:32:30 PM	9/24/2008 9:46:33 AM	Completed	2
19352	2 - High	9/22/2008 6:53:40 PM	9/23/2008 3:35:32 PM	Completed	1
19378	2 - High	9/24/2008 2:07:32 PM	9/26/2008 12:53:26 PM	Completed	2
19398	2 - High	9/26/2008 1:55:21 PM	9/29/2008 10:28:43 AM	Completed	3
19399	2 - High	9/26/2008 6:17:20 PM	9/29/2008 12:29:32 PM	Completed	3
19370	3 - Normal	9/24/2008 9:12:09 AM	9/24/2008 12:40:12 PM	Completed	0
19374	3 - Normal	9/24/2008 10:45:10 AM	9/25/2008 10:40:46 AM	Completed	1
19376	3 - Normal	9/24/2008 12:46:42 PM	10/2/2008 2:09:23 PM	Completed	8
19347	3 - Normal	9/22/2008 11:07:10 AM	9/29/2008 12:29:47 PM	Completed	7
19359	3 - Normal	9/23/2008 8:25:48 AM	9/24/2008 10:49:39 AM	Completed	1
19380	3 - Normal	9/24/2008 7:40:58 PM	9/26/2008 12:53:12 PM	Completed	2
19382	3 - Normal	9/25/2008 6:58:29 AM	9/25/2008 2:32:50 PM	Completed	0
19392	3 - Normal	9/26/2008 10:19:58 AM	9/29/2008 12:36:45 PM	Completed	3
19348	3 - Normal	9/22/2008 11:04:57 AM		Open	-
19409	1 - Very High	9/29/2008 9:52:34 AM	10/1/2008 12:54:37 PM	Completed	2
19411	2 - High	9/29/2008 2:24:35 PM		Open	-
19408	2 - High	9/29/2008 9:14:46 AM		Open	-
19419	3 - Normal	9/30/2008 10:59:06 AM	10/2/2008 2:09:05 PM	Completed	2
19420	3 - Normal	9/30/2008 12:07:30 PM	10/2/2008 2:08:52 PM	Completed	2
19406	3 - Normal	9/29/2008 7:59:52 AM	9/29/2008 12:29:17 PM	Completed	0
19410	3 - Normal	9/29/2008 2:23:16 PM		Open	-
19412	3 - Normal	9/29/2008 9:11:12 PM		Open	-
19413	3 - Normal	9/29/2008 9:29:54 PM		Open	-

46

	Pending Work Orders	Overdue Work Orders	Closed Work Orders	Avg Days to Complete
Hannibal Grant	6	0	40	3

For Jennifer Cook



Jennifer Cook

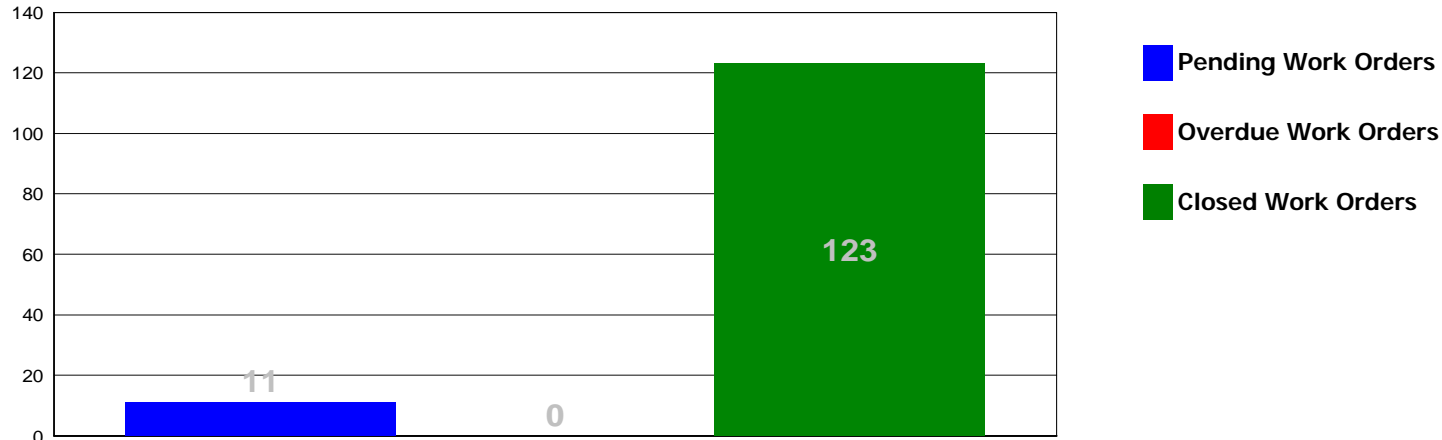
8/31/2008 Pending Work Orders 0 Overdue Work Orders 0 Closed Work Orders 1

Work Order	Priority	Opened	Closed	Status	Days To Complete
19193	5 - On hold	9/2/2008 8:27:17 PM	9/10/2008 8:21:10 AM	Cancelled	7
19273	1 - Very High	9/12/2008 11:20:14 AM	9/16/2008 9:45:58 AM	Cancelled	4
19342	1 - Very High	9/19/2008 5:52:22 PM	9/23/2008 11:02:48 AM	Cancelled	4
19340	2 - High	9/19/2008 4:32:52 PM	9/23/2008 11:01:24 AM	Cancelled	4
19341	3 - Normal	9/19/2008 4:51:03 PM	9/23/2008 11:01:56 AM	Cancelled	4
19294	3 - Normal	9/16/2008 1:18:18 PM	9/17/2008 6:52:37 AM	Cancelled	1
19281	5 - On hold	9/16/2008 6:59:25 AM		Open	-
19369	2 - High	9/24/2008 8:40:43 AM	9/24/2008 12:53:20 PM	Cancelled	0
19403	5 - On hold	9/26/2008 9:16:56 PM		Open	-
19343	5 - On hold	9/21/2008 2:27:29 PM		Open	-
19401	5 - On hold	9/26/2008 7:33:56 PM		Open	-

11

	Pending Work Orders	Overdue Work Orders	Closed Work Orders	Avg Days to Complete
Jennifer Cook	4	0	7	3

For Mark Klassen



Mark Klassen

8/31/2008		Pending Work Orders 0	Overdue Work Orders 0	Closed Work Orders 18	
Work Order	Priority	Opened	Closed	Status	Days To Complete
19198		9/3/2008 8:43:38 AM	9/11/2008 12:07:41 PM	Completed	8
19203		9/4/2008 8:36:49 AM	9/18/2008 12:37:16 PM	Completed	14
19204		9/4/2008 8:38:27 AM	9/17/2008 3:25:01 PM	Completed	13
19205		9/4/2008 8:47:21 AM	9/18/2008 12:47:31 PM	Completed	14
19194		9/3/2008 7:41:33 AM	9/11/2008 12:02:00 PM	Completed	8
19200	1 - Very High	9/3/2008 1:27:36 PM	9/11/2008 12:00:49 PM	Completed	8
19190	1 - Very High	9/2/2008 3:18:33 PM	9/11/2008 12:06:31 PM	Completed	9
19208	1 - Very High	9/4/2008 11:53:03 AM	9/16/2008 4:05:44 PM	Completed	12
19210	1 - Very High	9/4/2008 12:50:27 PM	9/16/2008 4:02:22 PM	Completed	12
19215	1 - Very High	9/5/2008 10:29:29 AM	9/18/2008 2:53:46 PM	Completed	13
19199	2 - High	9/3/2008 9:54:31 AM	9/16/2008 4:00:32 PM	Completed	13
19188	2 - High	9/2/2008 9:50:20 AM	9/16/2008 3:51:22 PM	Completed	14
19189	2 - High	9/2/2008 11:01:19 AM	9/16/2008 3:46:32 PM	Completed	14
19220	3 - Normal	9/5/2008 1:19:18 PM	9/17/2008 3:26:15 PM	Completed	12
19218	3 - Normal	9/5/2008 1:11:09 PM	9/17/2008 3:27:44 PM	Completed	12
19207	3 - Normal	9/4/2008 11:29:29 AM	9/24/2008 3:18:18 PM	Completed	20
19209	3 - Normal	9/4/2008 11:56:37 AM	9/17/2008 3:30:29 PM	Completed	13
19216	3 - Normal	9/5/2008 12:56:04 PM	9/18/2008 3:18:35 PM	Completed	13
19248		9/10/2008 7:53:06 AM	9/18/2008 12:52:06 PM	Completed	8
19274		9/12/2008 1:58:51 PM	9/24/2008 12:15:22 PM	Completed	12
19232		9/8/2008 10:36:25 AM	9/17/2008 3:32:26 PM	Completed	9
19254		9/10/2008 10:13:43 AM	9/16/2008 3:41:11 PM	Completed	6

19272		9/12/2008 11:19:11 AM	9/24/2008 12:18:19 PM	Completed	12
19246	1 - Very High	9/10/2008 7:25:11 AM	9/16/2008 3:40:13 PM	Completed	6
19276	1 - Very High	9/12/2008 4:02:52 PM	9/24/2008 3:15:44 PM	Completed	12
19264	1 - Very High	9/11/2008 7:21:17 AM	9/24/2008 11:31:27 AM	Completed	13
19231	1 - Very High	9/8/2008 10:29:12 AM	9/11/2008 12:18:27 PM	Completed	3
19261	1 - Very High	9/10/2008 3:01:59 PM	9/16/2008 3:42:26 PM	Completed	6
19253	1 - Very High	9/10/2008 10:00:09 AM	9/18/2008 3:24:10 PM	Closed	8
19249	2 - High	9/10/2008 7:59:07 AM	9/18/2008 12:51:07 PM	Completed	8
19251	2 - High	9/10/2008 9:16:03 AM	9/18/2008 1:03:35 PM	Completed	8
19241	2 - High	9/9/2008 8:51:35 AM	9/18/2008 2:46:22 PM	Completed	9
19242	2 - High	9/9/2008 9:59:03 AM	9/17/2008 3:49:39 PM	Completed	8
19225	2 - High	9/6/2008 6:14:10 PM	9/18/2008 2:47:32 PM	Completed	12
19229	2 - High	9/8/2008 9:28:06 AM	9/11/2008 12:19:45 PM	Completed	3
19230	2 - High	9/8/2008 10:14:54 AM	9/17/2008 3:37:02 PM	Completed	9
19239	2 - High	9/9/2008 7:56:15 AM	9/17/2008 3:43:13 PM	Completed	8
19236	2 - High	9/9/2008 7:37:49 AM	9/17/2008 3:45:44 PM	Completed	8
19258	2 - High	9/10/2008 1:34:47 PM	9/18/2008 12:23:11 PM	Completed	8
19270	2 - High	9/12/2008 8:11:06 AM	9/24/2008 2:54:21 PM	Closed	12
19256	2 - High	9/10/2008 1:17:54 PM	9/30/2008 2:23:04 PM	Closed	20
19271	2 - High	9/12/2008 9:11:43 AM	9/24/2008 3:16:52 PM	Completed	12
19250	3 - Normal	9/10/2008 8:55:57 AM	9/18/2008 2:44:40 PM	Completed	8
19275	3 - Normal	9/12/2008 2:29:16 PM	9/24/2008 2:51:22 PM	Completed	12
19228	3 - Normal	9/8/2008 8:53:20 AM	9/17/2008 3:47:29 PM	Completed	9
19255	3 - Normal	9/10/2008 10:42:35 AM	9/16/2008 3:44:11 PM	Completed	6
19257	3 - Normal	9/10/2008 1:26:28 PM	9/24/2008 12:31:54 PM	Completed	14
19259	3 - Normal	9/10/2008 1:34:38 PM	9/24/2008 12:04:40 PM	Completed	14
19260	3 - Normal	9/10/2008 1:53:48 PM	9/18/2008 12:27:27 PM	Completed	8
19278		9/15/2008 7:29:11 AM	9/24/2008 12:09:22 PM	Completed	9
19302		9/17/2008 7:40:53 AM	9/24/2008 12:39:46 PM	Completed	7
19303		9/17/2008 7:41:41 AM	9/24/2008 12:43:57 PM	Completed	7
19304		9/17/2008 7:55:08 AM	9/24/2008 12:37:56 PM	Completed	7
19317		9/18/2008 7:10:29 AM	9/30/2008 2:53:58 PM	Completed	12
19282		9/16/2008 8:31:50 AM	9/24/2008 2:53:20 PM	Completed	8
19283		9/16/2008 8:44:57 AM	10/1/2008 3:35:59 PM	Completed	15
19332		9/19/2008 8:02:47 AM	9/30/2008 2:55:55 PM	Completed	11
19309	1 - Very High	9/17/2008 10:20:44 AM	9/24/2008 1:40:02 PM	Completed	7
19298	1 - Very High	9/16/2008 4:08:04 PM	9/24/2008 1:52:59 PM	Completed	8
19331	1 - Very High	9/19/2008 6:45:41 AM	9/30/2008 12:20:05 PM	Completed	11
19333	1 - Very High	9/19/2008 9:12:29 AM	9/30/2008 2:58:21 PM	Completed	11
19279	2 - High	9/15/2008 7:51:42 AM	9/24/2008 11:19:12 AM	Completed	9
19306	2 - High	9/17/2008 9:49:26 AM	9/24/2008 1:51:48 PM	Completed	7
19307	2 - High	9/17/2008 9:56:37 AM	9/30/2008 1:50:43 PM	Completed	13
19308	2 - High	9/17/2008 10:19:42 AM	9/24/2008 12:42:19 PM	Completed	7
19316	2 - High	9/18/2008 7:10:27 AM	9/30/2008 12:18:35 PM	Completed	12
19318	2 - High	9/18/2008 7:28:15 AM	9/30/2008 2:49:53 PM	Completed	12
19299	2 - High	9/16/2008 4:13:38 PM	9/24/2008 1:43:15 PM	Completed	8
19296	2 - High	9/16/2008 2:42:01 PM	9/24/2008 12:35:39 PM	Completed	8

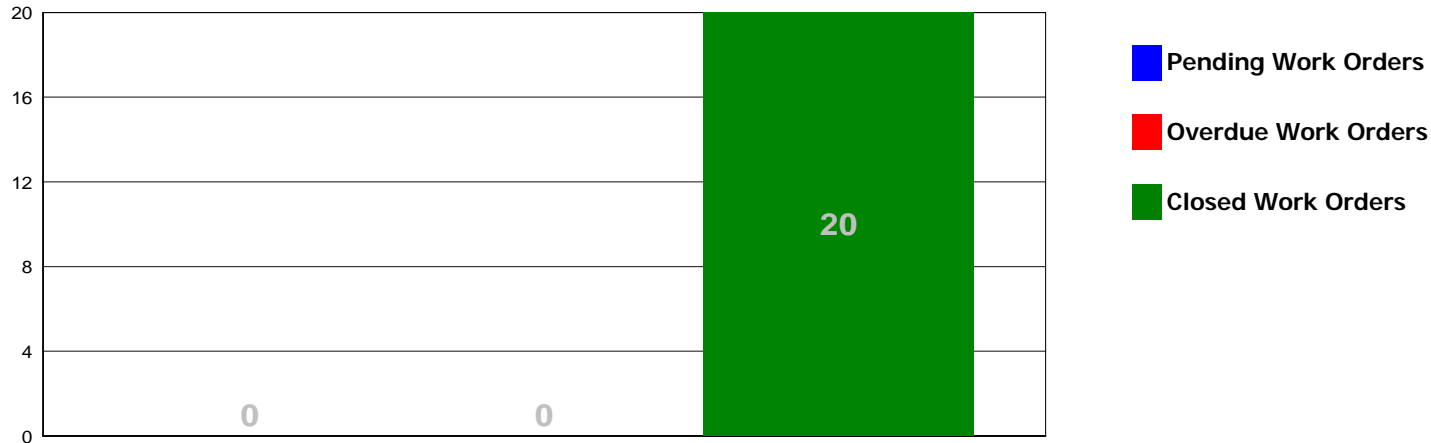
19322	2 - High	9/18/2008 10:01:13 AM	9/30/2008 12:27:44 PM	Completed	12
19311	2 - High	9/17/2008 1:01:30 PM	9/30/2008 3:03:44 PM	Completed	13
19336	2 - High	9/19/2008 2:50:23 PM	9/30/2008 12:46:58 PM	Completed	11
19337	2 - High	9/19/2008 2:58:37 PM	9/30/2008 12:49:27 PM	Completed	11
19338	2 - High	9/19/2008 4:05:29 PM	9/30/2008 12:43:59 PM	Completed	11
19305	3 - Normal	9/17/2008 8:27:06 AM	9/30/2008 12:25:47 PM	Completed	13
19290	3 - Normal	9/16/2008 10:57:50 AM	10/1/2008 3:32:18 PM	Completed	15
19313	3 - Normal	9/17/2008 1:49:02 PM	9/30/2008 12:21:57 PM	Completed	13
19314	3 - Normal	9/17/2008 4:15:14 PM	9/30/2008 12:50:42 PM	Completed	13
19315	3 - Normal	9/17/2008 4:20:08 PM	9/30/2008 2:16:27 PM	Completed	13
19319	3 - Normal	9/18/2008 7:30:19 AM	9/30/2008 2:51:48 PM	Completed	12
19300	3 - Normal	9/17/2008 6:44:43 AM	9/24/2008 11:17:15 AM	Completed	7
19326	3 - Normal	9/18/2008 2:51:34 PM	9/30/2008 3:01:27 PM	Completed	12
19327	3 - Normal	9/18/2008 4:19:31 PM	9/30/2008 12:52:23 PM	Completed	12
19328	3 - Normal	9/18/2008 4:25:36 PM	9/30/2008 12:55:21 PM	Completed	12
19293	3 - Normal	9/16/2008 12:52:28 PM	9/24/2008 1:55:45 PM	Completed	8
19284	3 - Normal	9/16/2008 8:51:20 AM	9/24/2008 12:44:56 PM	Completed	8
19286	3 - Normal	9/16/2008 9:01:21 AM	9/24/2008 1:35:23 PM	Completed	8
19339	3 - Normal	9/19/2008 4:17:19 PM	9/30/2008 1:47:04 PM	Completed	11
19335	5 - On hold	9/19/2008 11:23:35 AM		Open	-
19396		9/26/2008 1:12:04 PM	9/30/2008 2:21:15 PM	Completed	4
19385		9/25/2008 1:21:27 PM	10/2/2008 11:02:58 AM	Completed	7
19366		9/24/2008 8:05:54 AM	9/30/2008 3:16:22 PM	Completed	6
19375		9/24/2008 10:48:03 AM	9/30/2008 2:08:32 PM	Completed	6
19390	1 - Very High	9/26/2008 8:56:30 AM	10/2/2008 10:55:11 AM	Completed	6
19373	1 - Very High	9/24/2008 10:32:12 AM	9/30/2008 3:22:37 PM	Completed	6
19393	2 - High	9/26/2008 10:48:25 AM	9/30/2008 2:35:43 PM	Completed	4
19395	2 - High	9/26/2008 11:02:27 AM	10/2/2008 10:57:18 AM	Completed	6
19383	2 - High	9/25/2008 9:17:06 AM	10/2/2008 10:43:30 AM	Completed	7
19384	2 - High	9/25/2008 11:41:20 AM	9/30/2008 2:14:34 PM	Completed	5
19389	2 - High	9/26/2008 8:32:23 AM	9/30/2008 2:24:53 PM	Closed	4
19360	2 - High	9/23/2008 8:53:54 AM	9/30/2008 1:42:21 PM	Completed	7
19354	2 - High	9/23/2008 6:57:48 AM	9/30/2008 3:09:54 PM	Completed	7
19367	2 - High	9/24/2008 8:24:06 AM	9/30/2008 2:05:58 PM	Completed	6
19368	2 - High	9/24/2008 8:26:43 AM	9/30/2008 2:26:43 PM	Completed	6
19402	3 - Normal	9/26/2008 8:56:49 PM		Open	-
19391	3 - Normal	9/26/2008 9:58:36 AM		Open	-
19400	3 - Normal	9/26/2008 7:20:57 PM		Open	-
19397	3 - Normal	9/26/2008 1:41:40 PM		Open	-
19386	3 - Normal	9/25/2008 1:25:52 PM	9/30/2008 2:12:11 PM	Completed	5
19381	3 - Normal	9/24/2008 7:53:17 PM	10/2/2008 10:42:28 AM	Completed	8
19379	3 - Normal	9/24/2008 4:32:53 PM	9/29/2008 3:57:07 PM	Completed	5
19365	3 - Normal	9/24/2008 7:38:36 AM	9/30/2008 3:25:11 PM	Closed	6
19361	3 - Normal	9/23/2008 10:42:38 AM	10/1/2008 3:40:41 PM	Completed	8
19362	3 - Normal	9/23/2008 1:42:16 PM	9/30/2008 1:44:35 PM	Completed	7
19363	3 - Normal	9/23/2008 2:02:13 PM	10/1/2008 3:41:55 PM	Completed	8
19353	3 - Normal	9/23/2008 6:43:58 AM	9/30/2008 3:14:24 PM	Completed	7

19355	3 - Normal	9/23/2008 7:13:59 AM	9/29/2008 4:13:52 PM	Completed	6
19356	3 - Normal	9/23/2008 7:42:16 AM	9/30/2008 3:13:08 PM	Completed	7
19357	3 - Normal	9/23/2008 7:43:23 AM	9/30/2008 3:12:12 PM	Completed	7
19358	3 - Normal	9/23/2008 7:51:12 AM	9/30/2008 2:04:01 PM	Completed	7
19350	3 - Normal	9/22/2008 6:35:33 PM	9/30/2008 1:55:21 PM	Completed	8
19351	3 - Normal	9/22/2008 6:44:52 PM	9/30/2008 3:05:01 PM	Completed	8
19377	3 - Normal	9/24/2008 1:35:18 PM	10/1/2008 3:48:10 PM	Completed	7
19371	3 - Normal	9/24/2008 10:00:47 AM	9/30/2008 2:18:35 PM	Completed	6
19388	3 - Normal	9/25/2008 1:36:31 PM	10/2/2008 10:47:02 AM	Completed	7
19346	3 - Normal	9/22/2008 10:05:09 AM	10/1/2008 3:39:31 PM	Completed	9
19418		9/30/2008 11:08:27 AM		Open	-
19421	1 - Very High	9/30/2008 12:42:57 PM		Open	-
19414	2 - High	9/30/2008 7:55:12 AM		Open	-
19407	3 - Normal	9/29/2008 8:11:07 AM		Open	-
19405	3 - Normal	9/29/2008 7:31:15 AM		Open	-
19422	3 - Normal	9/30/2008 2:41:13 PM		Open	-
19404	3 - Normal	9/29/2008 7:10:11 AM	10/2/2008 11:06:05 AM	Completed	3
19416	3 - Normal	9/30/2008 10:25:05 AM	10/2/2008 11:09:58 AM	Completed	2

134

	Pending Work Orders	Overdue Work Orders	Closed Work Orders	Avg Days to Complete
Mark Klassen	11	0	123	9

For Martin Byrne

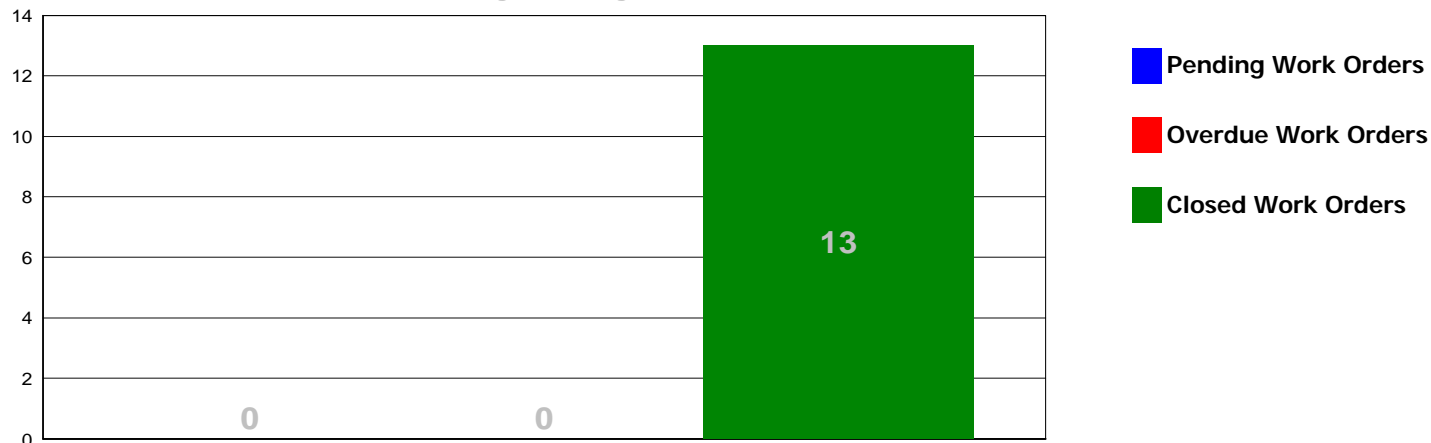


Martin Byrne

8/31/2008	Pending Work Orders	0	Overdue Work Orders	0	Closed Work Orders	4
Work Order	Priority	Opened	Closed	Status	Days To Complete	
19187		9/2/2008 6:58:43 AM	9/2/2008 9:02:28 AM	Closed	0	
19214	1 - Very High	9/4/2008 3:20:18 PM	9/5/2008 10:41:55 AM	Closed	1	
19211	1 - Very High	9/4/2008 2:17:58 PM	9/4/2008 3:23:55 PM	Closed	0	
19206	3 - Normal	9/4/2008 9:22:50 AM	9/4/2008 9:43:58 AM	Closed	0	
19233	1 - Very High	9/8/2008 11:09:11 AM	9/9/2008 8:06:07 AM	Closed	1	
19234	1 - Very High	9/8/2008 2:06:30 PM	9/9/2008 9:10:33 AM	Closed	1	
19235	1 - Very High	9/8/2008 2:48:11 PM	9/9/2008 7:11:52 AM	Closed	1	
19265	1 - Very High	9/11/2008 8:14:08 AM	9/11/2008 8:41:41 AM	Closed	0	
19266	1 - Very High	9/11/2008 8:16:59 AM	9/11/2008 8:35:27 AM	Closed	0	
19267	1 - Very High	9/11/2008 8:30:30 AM	9/11/2008 8:32:43 AM	Closed	0	
19269	1 - Very High	9/11/2008 11:35:37 AM	9/11/2008 1:08:58 PM	Closed	0	
19224	3 - Normal	9/6/2008 5:50:10 PM	9/8/2008 12:43:55 PM	Closed	2	
19320		9/18/2008 8:00:57 AM	9/19/2008 10:51:26 AM	Closed	1	
19292	1 - Very High	9/16/2008 11:08:56 AM	9/17/2008 8:59:44 AM	Completed	1	
19295	1 - Very High	9/16/2008 2:33:13 PM	9/17/2008 9:21:29 AM	Closed	1	
19291	1 - Very High	9/16/2008 11:06:15 AM	9/16/2008 1:19:53 PM	Closed	0	
19387	1 - Very High	9/25/2008 1:30:25 PM	9/26/2008 7:53:03 AM	Closed	1	
19344	1 - Very High	9/22/2008 7:29:00 AM	9/23/2008 8:38:39 AM	Closed	1	
19417	1 - Very High	9/30/2008 10:47:08 AM	9/30/2008 4:13:11 PM	Closed	0	
19415	2 - High	9/30/2008 10:13:21 AM	9/30/2008 2:57:56 PM	Closed	0	

	Pending Work Orders	Overdue Work Orders	Closed Work Orders	Avg Days to Complete
Martin Byrne	0	0	20	1

For Roger Cheng



Roger Cheng

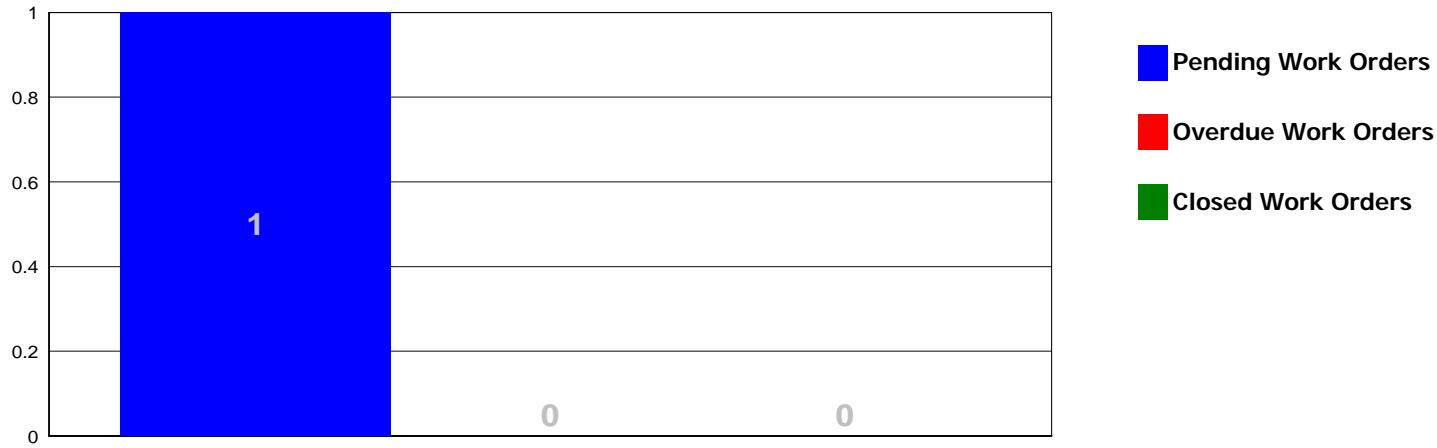
8/31/2008 Pending Work Orders 0 Overdue Work Orders 0 Closed Work Orders 4

Work Order	Priority	Opened	Closed	Status	Days To Complete
19221	1 - Very High	9/5/2008 1:27:11 PM	9/11/2008 12:13:07 PM	Completed	6
19212	2 - High	9/4/2008 2:22:50 PM	9/5/2008 12:18:22 PM	Closed	1
19191	2 - High	9/2/2008 7:47:40 PM	9/5/2008 12:17:33 PM	Closed	3
19195	3 - Normal	9/3/2008 7:55:30 AM	9/5/2008 12:17:55 PM	Closed	2
19243	2 - High	9/9/2008 11:05:37 AM	9/11/2008 12:13:24 PM	Completed	2
19244	2 - High	9/9/2008 1:29:30 PM	9/11/2008 12:13:40 PM	Completed	2
19245	2 - High	9/10/2008 7:13:58 AM	9/11/2008 12:14:05 PM	Completed	1
19310	2 - High	9/17/2008 12:33:28 PM	9/18/2008 10:10:36 AM	Completed	1
19324	2 - High	9/18/2008 11:03:22 AM		Open	-
19287	3 - Normal	9/16/2008 9:20:46 AM	9/18/2008 10:19:38 AM	Completed	2
19321	3 - Normal	9/18/2008 7:59:22 AM		Open	-
19285	4 - Low	9/16/2008 9:01:44 AM	9/18/2008 10:12:10 AM	Completed	2
19372	2 - High	9/24/2008 10:20:00 AM		Open	-

13

	Pending Work Orders	Overdue Work Orders	Closed Work Orders	Avg Days to Complete
Roger Cheng	0	0	13	2

For Steve Saitman



Steve Saitman

9/14/2008	Pending Work Orders	1	Overdue Work Orders	0	Closed Work Orders	0
Work Order	Priority	Opened	Closed	Status	Days To Complete	
19297	3 - Normal	9/16/2008 2:43:25 PM		Open	-	

1	Pending Work Orders	Overdue Work Orders	Closed Work Orders	Avg Days to Complete
Steve Saitman	1	0	0	-