

## LAYHER Metal Board correction

Dear ladies and gentlemen,

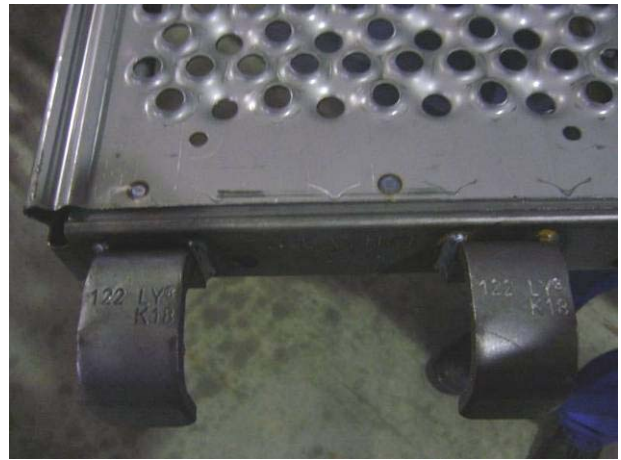
You might have gotten some information concerning supposed cracked **top** welds on Layher metal boards (see picture below) leading to the allegation that the load bearing capability might be compromised. **This is incorrect, there are no top welds on Layher boards, only brittle zinc coat cracked and this does not compromise the boards load bearing at all.**



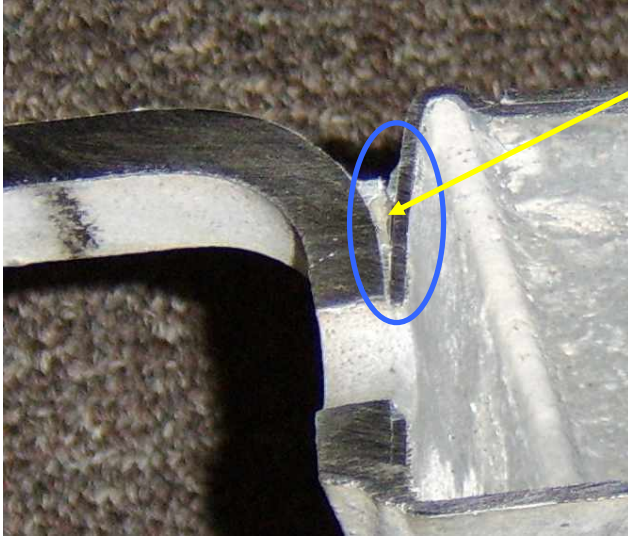
Pic. 1: Picture out of METAL BOARD warning

The cracks shown here **are cracks of the zinc coat only**. While hot dipping the boards in zinc the groove between hook and board fills up with liquid zinc. This brittle zinc can break under severe abuse, but there is no structural degradation at all. These cracks are not cracks in the welded area, in fact **there are no welds at the top of the hooks** at all.

Please see below picture right after welding before zinc coating:



Pic. 2 and 3: Metal board after welding and before zinc coating – **NO TOP WELD ON HOOKS!**



Pic. 4: Section cut through middle of hook. Clearly shows the brighter zinc drip.

On these pictures it is clearly visible that there is no top weld by design.

Layher engineered and thoroughly tested the board – hook attachment design and herewith states that the zinc coating cracks do not compromise the load bearing of the board in any way. Layher is well known for its high quality and good craftsmanship and grants best products.

In case of any further question in relation to these metal boards or any other subject relating quality or load bearing please do not hesitate to contact us.

Sincerely

Frank Frietsch  
Vice President  
Layher, Inc.  
1-866-300-0904  
1-713 947-1444  
[www.layherusa.com](http://www.layherusa.com)  
frank.frietsch@layherscaf.com